



Lead Children's Lives
to Infinite Possibilities





I. Overview of SPC Group



II. Operating Performance



III. Future Operating Layout and Prospects

Profile & History of SPC



Chairman -- Shu-Ling Tseng



Employees -- About 223 persons



Paid-in Capital -- NT\$ 191,004 (thousands)

I. Overview of SPC Group

2023年

2022年

2021年

2020年

2019年

2018年

2017年

Acquired 100% shares of Chen-Li Education Co., Ltd.

Joint venture Prime Education Consulting Co., Ltd. was established, holding 51% of the shares.

I. Acquired 100% shares of Chen-Li ELM Co., Ltd.
II. The industry category of listed companies on the R.O.C stock market changed from telecommunication network stocks to other stocks.

I. Acquired 49% shares of Prime Education Consulting, the shareholding ratio increased to 100% and changed its Company name to "Here Co., Ltd."
II. Disposal 100% equity of subsidiary, Success Prime Optical Fiber.
III. Established a joint venture "Li-Ren Education Co., Ltd.", holding 60% of the shares.

The Group revised its strategy, including adjusting the business of its subsidiary Chen-Li Xiamen, and recognized a one-off fixed asset impairment of 11.11 million.

Acquired adult online vocational education "Xuemi Co., Ltd.", holding 47.43% of the shares.

Established a joint venture in Indonesia "PT GXI Digital Edtech (GXI)", holding 60% of the shares

Condensed Income Statement

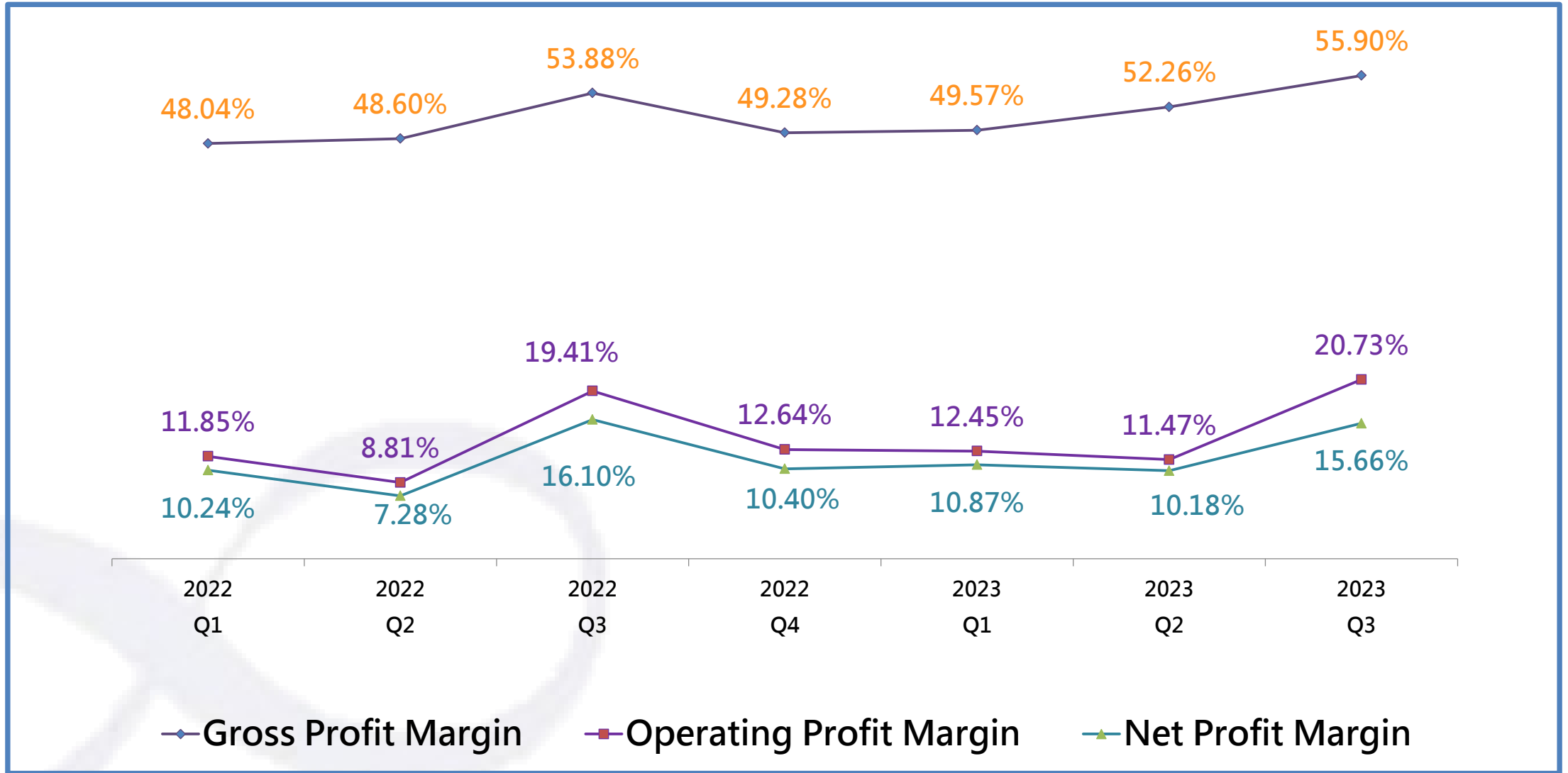
Unit: NT\$ thousands



	1-3Q/2023	1-3Q/2022	YoY	2022年
Operating Revenue	557,537	510,305	9.26%	702,257
Operating Costs	262,969	252,695	4.07%	350,056
Gross profit	294,568	257,610	14.35%	352,201
Gross Profit Margin	52.83%	50.48%	-	50.15%
Operating Expenses	209,241	186,838	11.99%	257,158
Operating Profit	85,327	70,772	20.57%	95,043
Operating Profit Margin	15.30%	13.87%	-	13.53%
Non-operating Income and Expenses	2,740	3,058	-10.40%	3,333
Net Income after Tax	69,595	59,303	17.35%	79,261
Net Profit Attributable to Owners of the Parent	69,718	58,914	18.34%	78,704
EPS(NTD)	3.68	3.11	18.33%	4.16

II. Operating Performance

Profitability



II. Operating Performance

Quarterly Revenue and EPS



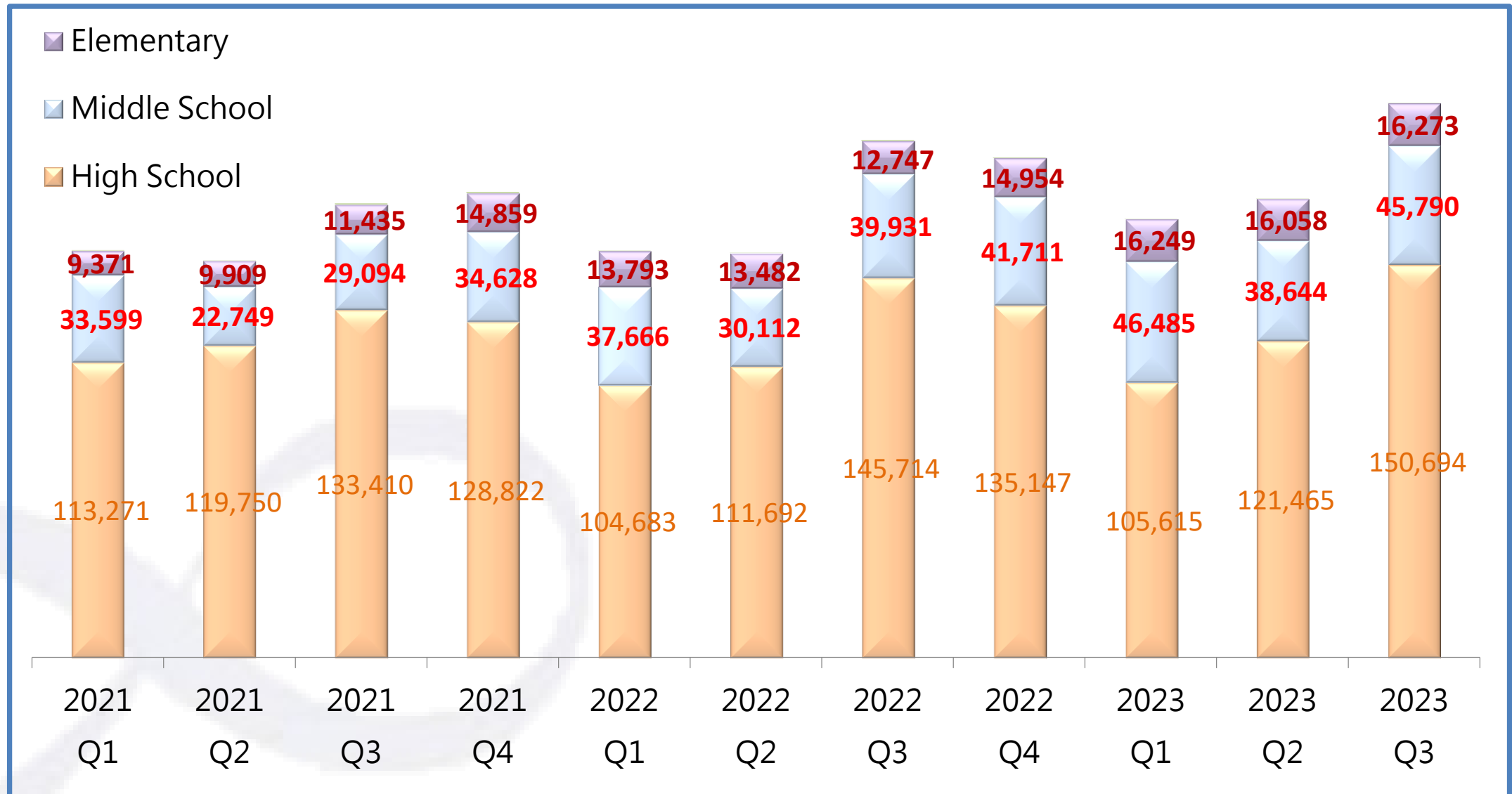
Revenue 【NT\$ thousands】	Q1	Q2	Q3	Q4	Year
112	168,417	176,258	212,862		557,537
111	156,229	155,352	198,724	191,952	702,257
110	156,348	152,502	174,359	178,711	661,920

EPS	Q1	Q2	Q3	Q4	Year
112	0.96	0.93	1.79		3.68
111	0.84	0.59	1.68	1.05	4.16
110	0.79	0.47	1.23	0.53	3.02

II. Operating Performance

Revenue Distribution in Different Fields

Unit: NT\$ thousands



II. Operating Performance

Dividend Policy



Unit: NTD, %

	2020	2021	2022
EPS	3.30	3.02	4.16
Stock Dividend	-	-	-
Cash Dividend	4.5	3.0	3.3
Distribution Yield (NTD)	4.5	3.0	3.3
Dividend Payout Ratio (%)	136%	99%	79%
ROE	7.84%	7.07%	9.90%
ROA	4.78%	4.71%	6.40%



OUR FUTURE

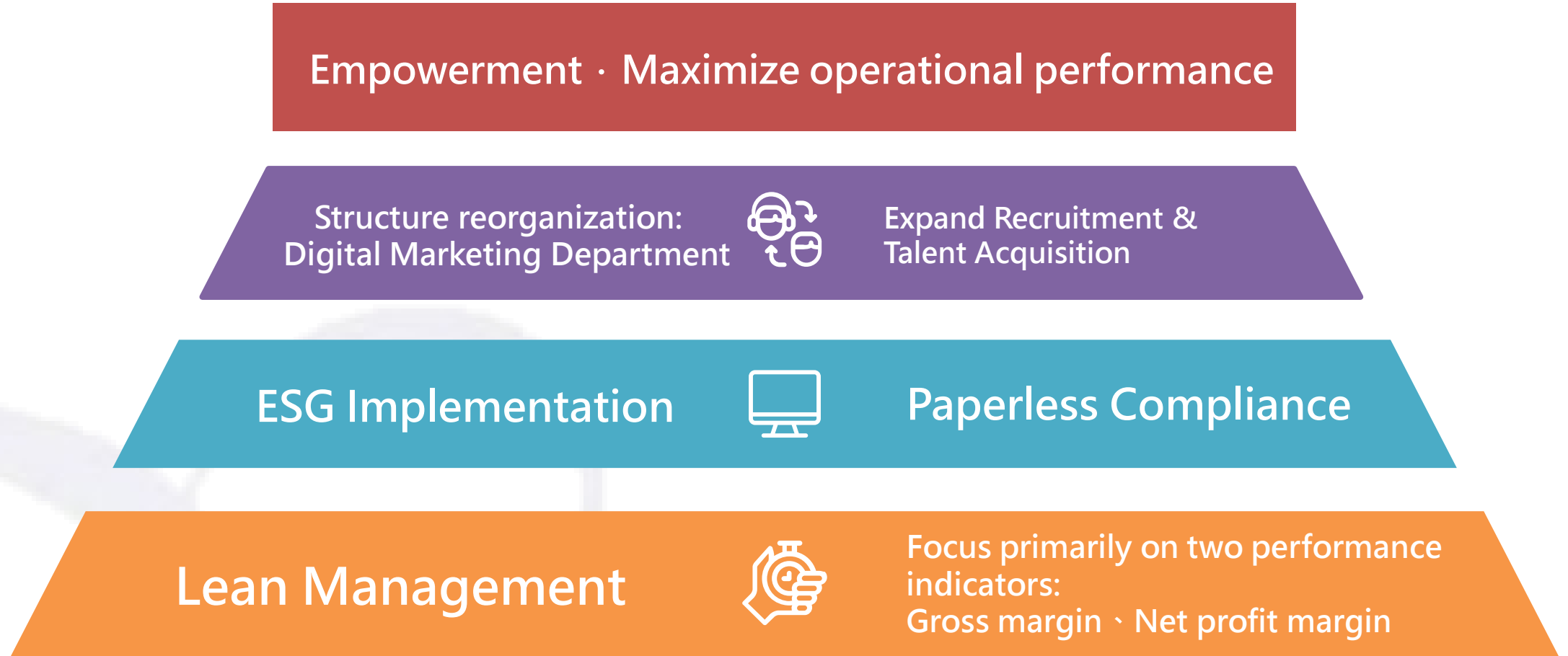
Operational Focus and
Development



Operational Focus and Development 【Management】



The 3 principles of Management



Operational Focus and Development 【Chen-Li Education】



The 3 Multiples



Multiple subjects

From 2.5 → 4

Multiple examinations

Extend our coverage to all types of examination

Multiple locations

Increase 2-3 direct branches
Establish small classes for Grade 5 to Grade 12

2024 Goal

Operational Focus and Development 【Chen-Li Elementary Education】



The Five Models

Extend beyond elementary age groups to middle-schoolers (Grade 7-9)

Generate a talent pool of professional teachers

B2B2C

Cater to the demands of the self-study community

Increase Market Share and Market Penetration

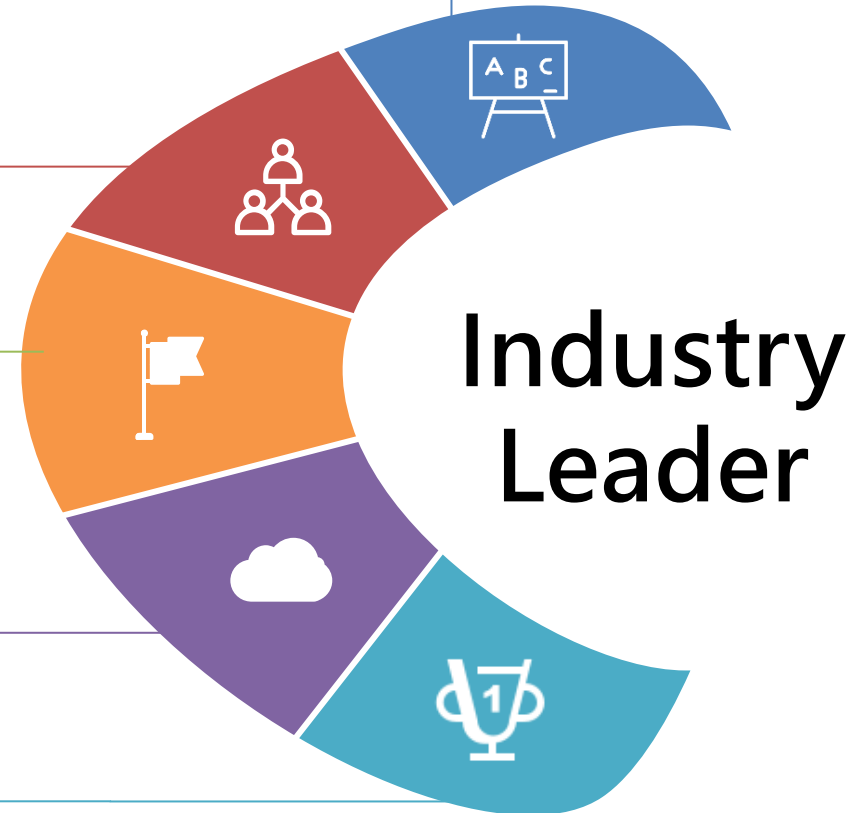
English language centers

Train the Trainer

One District One location

Online Course

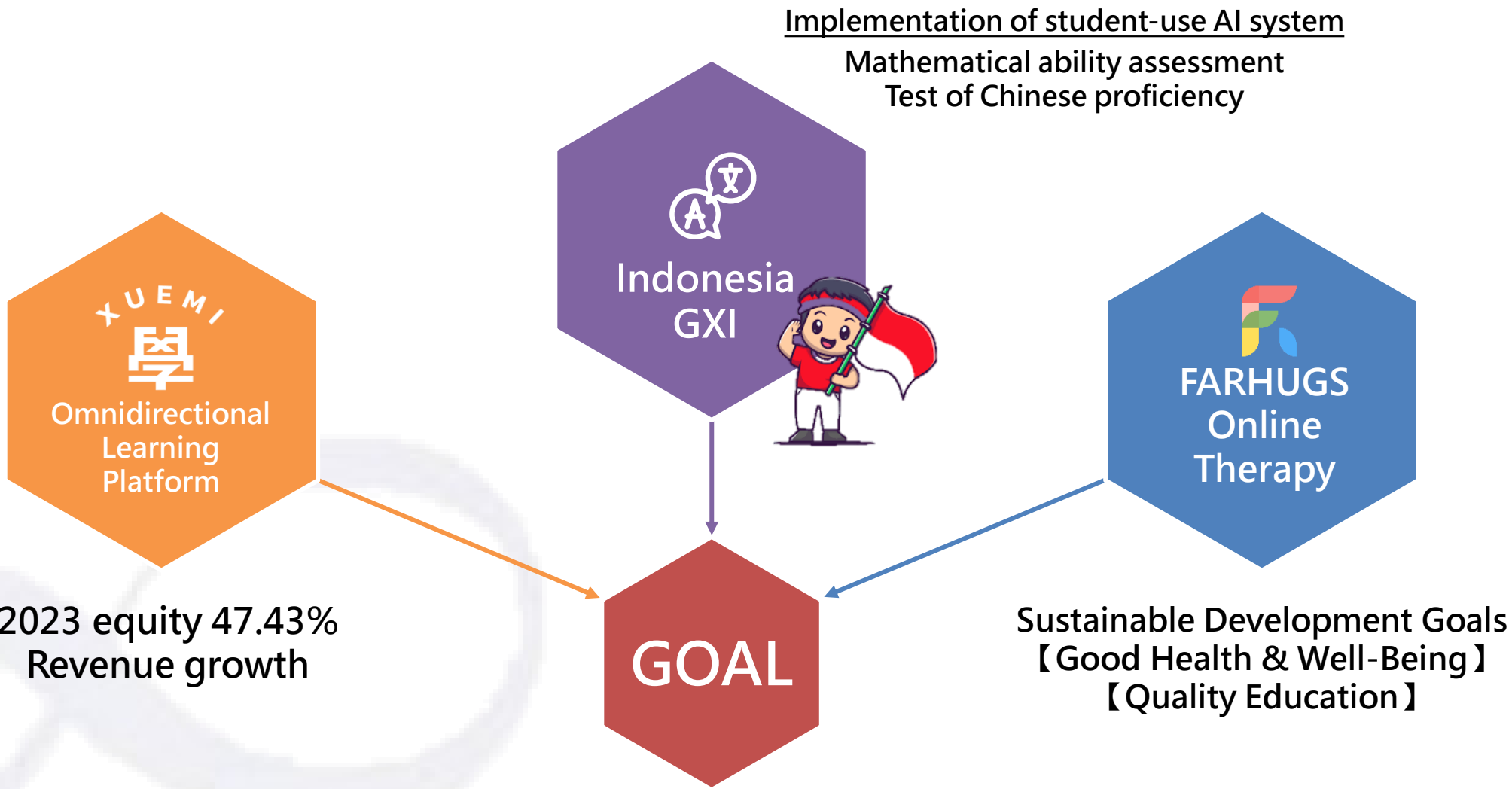
Private Institutions



2024 New Outlook and Projects



Three future Engines





THANK YOU

